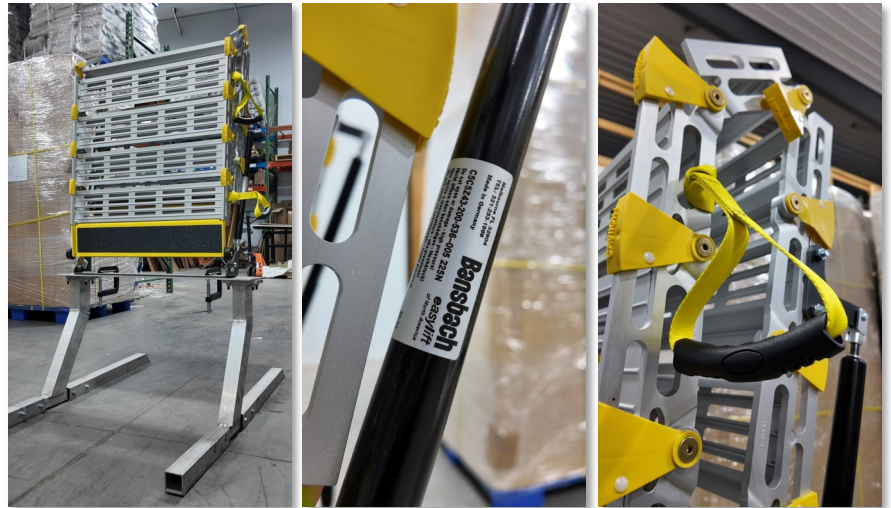




FEATURES & BENEFITS

- German-engineered gas struts reduce required exertion by 40%.
- Ergonomic adjustable handles.
- Occupied internal depth of only 10" - 12".
- Sturdy 1,000 pound load capacity*.
- Enables access to vans at low cost!



Available ramp widths:
26"
30"
36"

Available ramp lengths:
6'
7'
8'
9**

Always Confirm Vehicle Compatibility Before Ordering!

REAR INSTALLATION



SIDE INSTALLATION



***Weight capacity of 9' x 30" Folding Ramp and 9' x 36" Folding Ramp is 850 pounds**